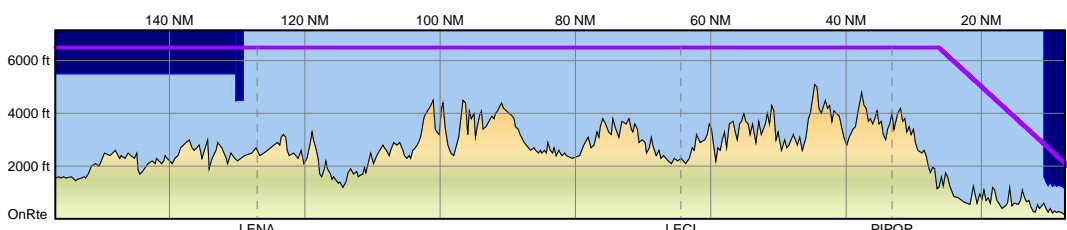
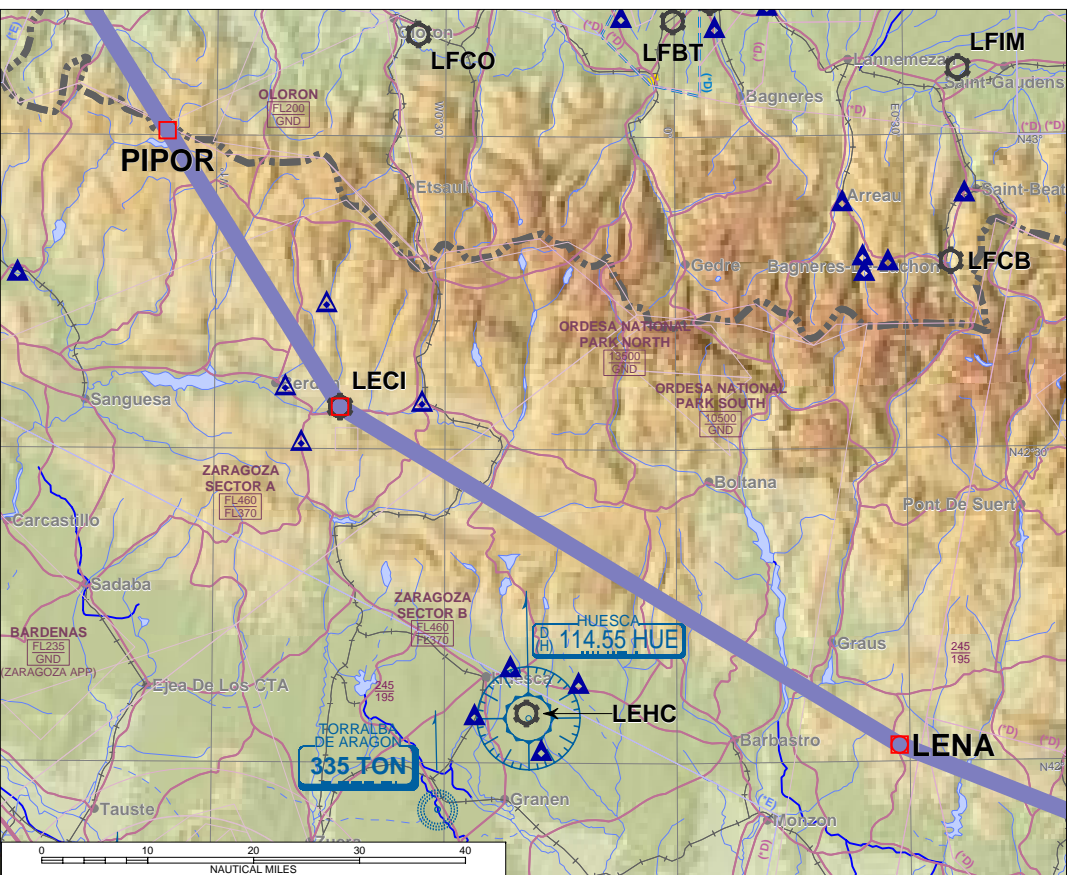
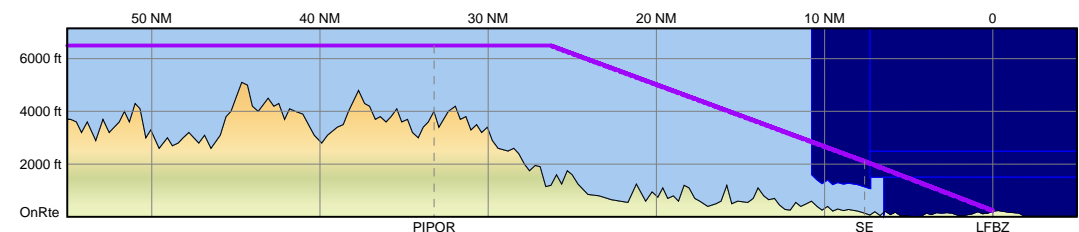


WAYPOINTS (FIXES)	ROUTE MEA/ (MORA)	BEG ALT	MC	FUEL (Gal)		DIST (NM)		SPD (Kts)		ETE	ATA	WIND	POWER
				LEG	LEG	LEG	LEG	TAS	EST GS				
LELL Sabadell N 41° 31.3' E 02° 06.3'		END ALT	MH	37	206	79	00:12						Climb Power
LENA N 42° 01.7' E 00° 28.7'	CLIMB	485	293	2	16	79	00:12						
		(8000)	6500	293	35	190	79	00:12					
	CRUISE	6500	293	4	63	104	00:36						2400
		(13,500)	6500	292	31	127	104	00:48					
LECI Santa Cilia ... N 42° 34.2' W 00° 43.7'	CRUISE	6500	303	4	63	104	00:36						2400
		(13,500)	6500	302	27	64	104	01:25					



WAYPOINTS (FIXES)	ROUTE MEA/ (MORA)	BEG ALT	MC	FUEL (Gal)		DIST (NM)		SPD (Kts)		ETE	ATA	WIND	POWER
				LEG	LEG	LEG	LEG	TAS	EST GS				
LENA N 42° 01.7' E 00° 28.7'	(13,500)	END ALT	MH	31	127	104	00:36						2400
				4	63	104	00:36						
LECI Santa Cilia ... N 42° 34.2' W 00° 43.7'	(13,500)	6500	303	4	63	104	00:36						2400
		6500	302	27	64	104	01:25						
PIPOR PIPOR N 43° 00.5' W 01° 06.5'	(13,200)	6500	329	2	31	104	00:18						2400
		6500	329	25	33	104	01:43						



WAYPOINTS (FIXES)	ROUTE MEA/ (MORA)	BEG ALT	MC	FUEL (Gal)		DIST (NM)		SPD (Kts)		ETE	ATA	WIND	POWER
				LEG	LEG	LEG	LEG	TAS	EST GS				
LECI Santa Cilia ... N 42° 34.2' W 00° 43.7'	(13,500)	END ALT	MH	27	64	104	00:36						2400
				27	64	104	00:36						
PIPOR PIPOR N 43° 00.5' W 01° 06.5'	(13,200)	6500	329	2	31	104	00:18						2400
		6500	329	25	33	104	01:43						
SE N 43° 22.1' W 01° 25.4'	(7900)	6500	329	0	7	104	00:04						2400
		6500	329	25	26	104	01:47						
LFBZ Bayonne-A... N 43° 28.1' W 01° 31.9'	(7900)	2118	329	1	19	128	00:09						Descent Power
		2118	329	24	8	128	01:55						
LFBZ Bayonne-A... N 43° 28.1' W 01° 31.9'	(7900)	2118	324	0	8	122	00:04						Descent Power
		245	324	23	0	122	01:59						

NAVIGATION LOG

LELL -> LFBZ
(Page 1 of 2)

76996 ; 68
FliteMap 9.160



REPORT DATE	July 31, 2007	AIRCRAFT TYPE	Cessna Skyhawk
NAVDATA EXP. DATE	June 07, 2007	AIRCRAFT TAIL #	cess172l

ATIS

FILED ROUTE
N42017E000287 LECI PIPOR N43221W001254

CLEARANCE

LELL Sabadell	TWR 121.9	TWR 120.8	BLOCK OFF
			TIME OFF

WAYPOINTS (FIXES)	ROUTE MEA/(MORA)	BEG ALT	MC	FUEL (Gal)		DIST (NM)		SPD (Kts)		ETE	ATA	WIND	POWER
				LEG	LEG	TAS	EST GS	ATE	OAT				
LELL Sabadell N 41° 31.3' E 02° 06.3'		END ALT	MH	REM	REM					CUMM			
				37	206								
LENA N 42° 01.7' E 00° 28.7'	CLIMB (8000)	485	293	2	16	79	00:12						Climb Power
		6500	293	35	190	79	00:12						2400
LECI Santa Cilia... N 42° 34.2' W 00° 43.7'	CRUISE (13,500)	6500	303	4	63	104	00:36						2400
		6500	302	31	127	104	00:48						2400
PIPOR PIPOR N 43° 00.5' W 01° 06.5'	CRUISE (13,200)	6500	329	2	31	104	00:18						2400
		6500	329	25	33	104	01:43						2400
SE N 43° 22.1' W 01° 25.4'	CRUISE (7900)	6500	329	0	7	104	00:04						2400
		6500	329	25	26	104	01:47						2400
LFBZ Bayonne-A... N 43° 28.1' W 01° 31.9'	DESCENT (7900)	6500	329	1	19	128	00:09						Descent Power
		2118	329	24	8	128	01:55						Descent Power
ROUTE TOTALS				13	206		01:59						
LFBZ Bayonne-Ang	ATIS 128.225 APP 125.6	TWR 118.7	GND 121.95			TIME ON							
						BLOCK ON							

NAVIGATION LOG

LELL -> LFBZ
(Page 2 of 2)

76996 ; 68
FliteMap 9.160



REPORT DATE	July 31, 2007	AIRCRAFT TYPE	Cessna Skyhawk
NAVDATA EXP. DATE	June 07, 2007	AIRCRAFT TAIL #	cess172l

NOTES:

General Info

Sabadell, ESP
N 41° 31.3' E 02° 06.3' Magnetic Variation: 0.0°W
Elevation: 485'

Public, Control Tower, VFR, Landing Fee,
Customs availble on a restrcted basis
Pattern Altitude: 1200 feet AGL
Fuel: 100LL, Jet A-1

Time Zone Info: GMT+1:00 uses DST

Runway Info

Runway 13-31 2953' x 98' asphalt

Runway 13 (128.0°M) TDZE 485'

Lights: Edge

Runway 31 (308.0°M) TDZE 445'

Lights: Edge

Right Traffic

Communications Info

Sabadell Tower **120.8**
Ground Movement Control Tower **121.9**

Weather Info**Notebook Info****General Info**

Santa Cilia De Jaca, ESP
N 42° 34.2' W 00° 43.7' Magnetic Variation: 1.5°W
Elevation: 2244'

Private, VFR, No Fee, No Customs
Pattern Altitude: 1000 feet AGL
Fuel: 100LL

Time Zone Info: GMT+1:00 uses DST

Runway Info

Runway 09-27 2789' x 82' asphalt

Runway 09 (90.0°M) TDZE 2244'

Right Traffic

Runway 27 (270.0°M) TDZE 2244'

Communications Info

Santa Cilia Information **123.5** Non-English

Weather Info**Notebook Info**

General Info

Biarritz, FRA

N 43° 28.1' W 01° 31.9' Magnetic Variation: 1.8°W

Elevation: 245'

Public, Control Tower, IFR, Landing Fee,

Customs availble on a restrcted basis

Pattern Altitude: 1000 feet AGL

Fuel: 100LL, Jet, Jet A-1

Repairs: Minor Airframe, Minor Engine

Time Zone Info: GMT+1:00 uses DST

Runway Info

Runway 09-27 7382' x 148' tarmac

Runway 09 (91.0°M) TDZE 242'

Lights: Edge, REIL

Right Traffic

Displaced Threshold Distance 656'

Runway 27 (271.0°M) TDZE 219'

Lights: Edge, REIL

Communications Info

ATIS **128.225**

Biarritz Tower **118.7**

Biarritz Ground Control **121.95**

Biarritz Approach Control **125.6**

Weather Info

Notebook Info